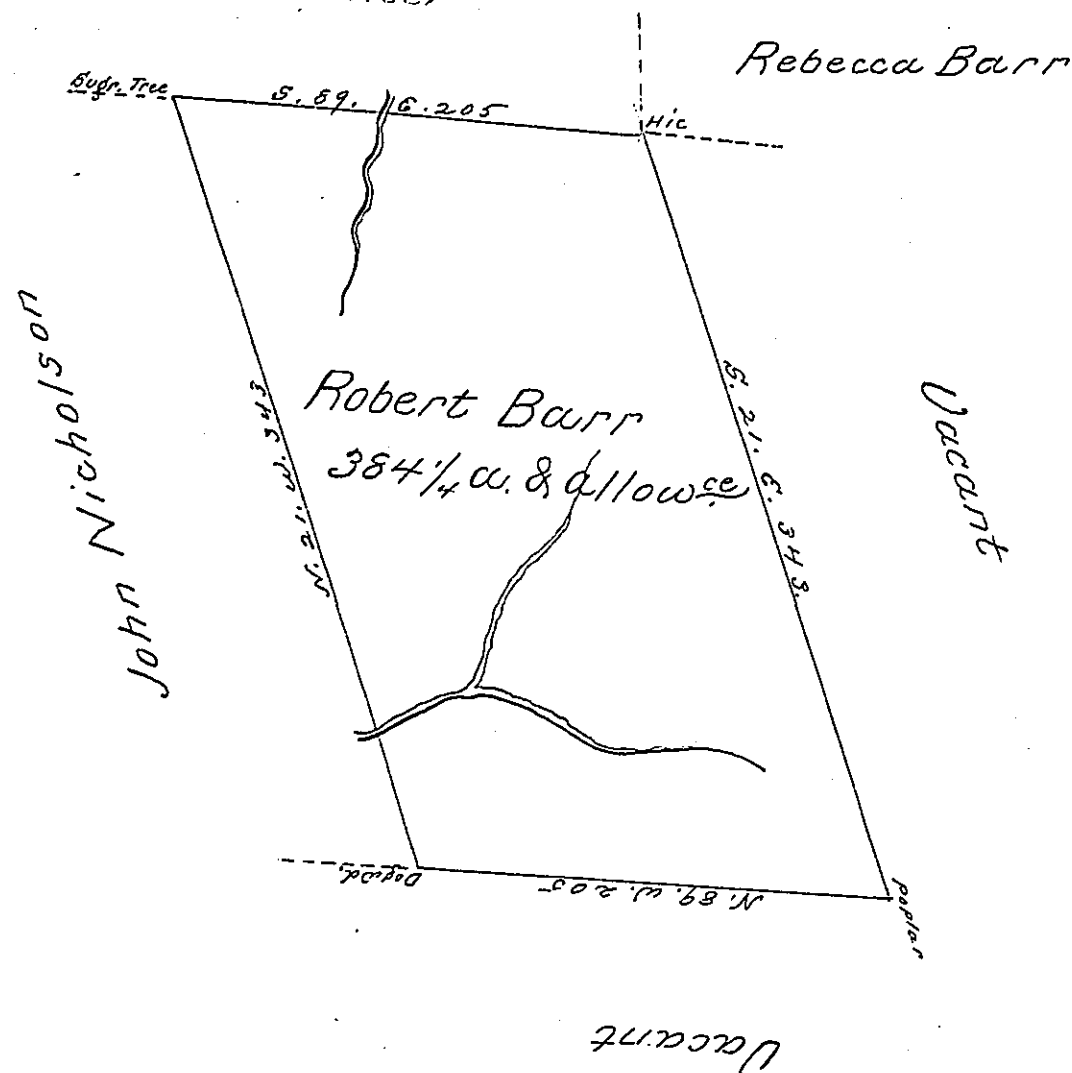


Lieut. Wm. Hunter



Survey'd to Robert Barr on the 19th. day of July 1787, the above described tract of three hundred & eighty four acres & a quarter of an acre & allowance of six pcent. Including a large bottom East of Perry's Camp whereon grows a number of quaking asp trees including both sides of a branch of Yellow creek in Westmoreland County. By Warrant of the 23d. day of July 1784.

Joshua Elder D.S.

John Lukens Esqr. S. Genl.

IN TESTIMONY that the above is a copy of the original remaining on file in the Department of Internal Affairs of Pennsylvania, made conformably to an Act of Assembly approved the 16th day of February, 1833, I have hereunto set my Hand and caused the Seal of said Department to be affixed at Harrisburg, this fourth day of September 1900

James W. Latta
Secretary of Internal Affairs.